

# Disclaimer

As we stated during our presentations (10<sup>th</sup> July 2014) the projects mentioned that are on-going or proposed are subject to review by the new Transport and Environment Portfolio Holder Councillor Ellcome and may be altered.

Should you have any questions regarding any issues raised in this presentation or have any Road Safety and Active travel queries please do not hesitate to contact us:

[James.roberts1@portsmouthcc.gov.uk](mailto:James.roberts1@portsmouthcc.gov.uk)

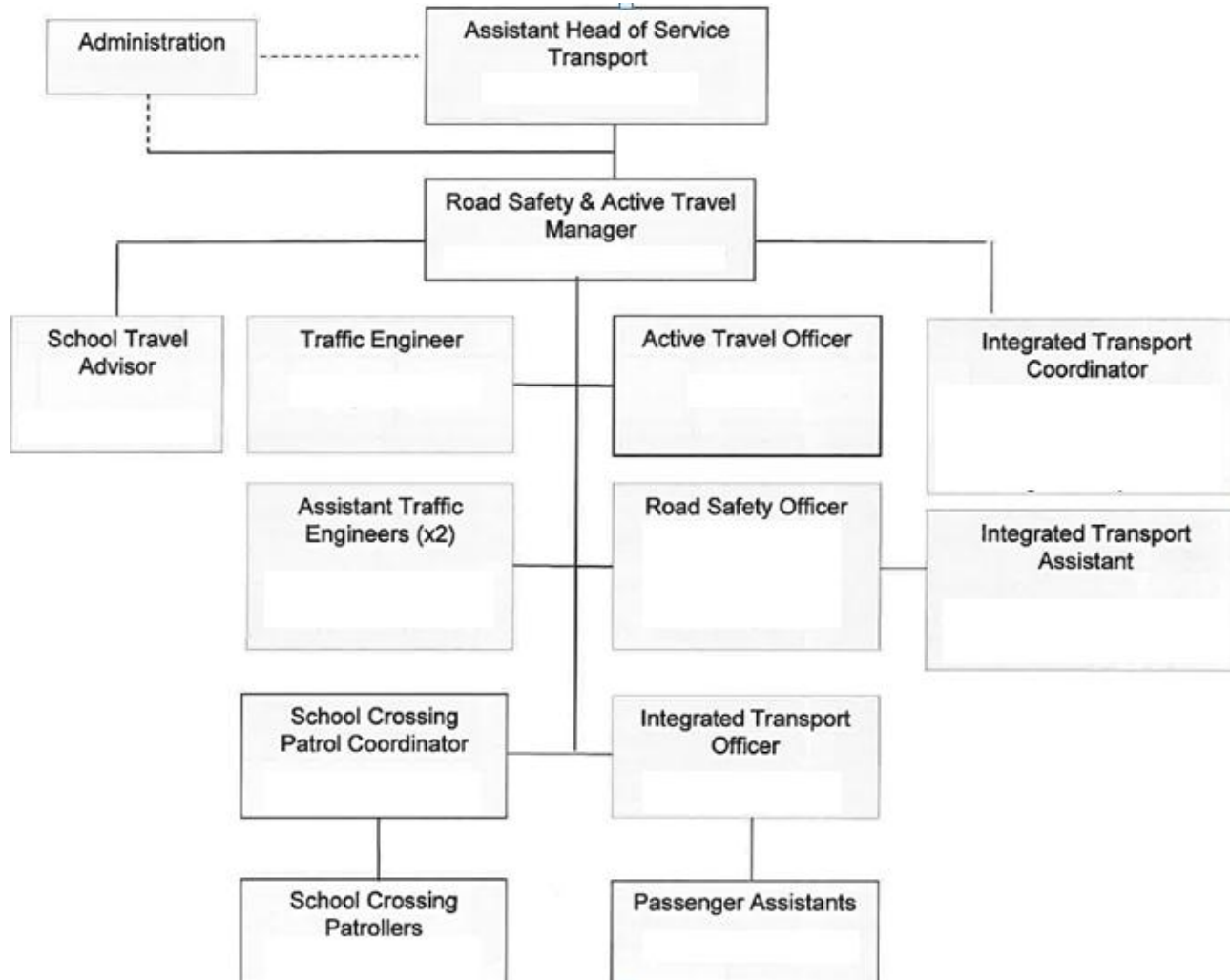
[Oliver.willcocks@portsmouthcc.gov.uk](mailto:Oliver.willcocks@portsmouthcc.gov.uk)

# **Active Travel within Portsmouth**

James Roberts  
Active Travel Officer

# Road Safety and Active Travel

## Team Structure



# Key Roles and Responsibilities

- Responsible for the provision of advice on active travel and implementing solutions to varied and complex issues.
- Work closely with the Road Safety team
- Provide advice to a wide range of audiences,
- Project manage schemes that will improve the active travel network within the city
- Maintain and update the Definitive Map (Public Rights of Way PROW)

# Active Travel within Portsmouth

- Portsmouth lends itself to different methods of Active Travel
- Will factor in the future social and economic development of the city
- Aims to give all residents the tools to choose to travel actively in their everyday activities

# The City of Portsmouth

- 206,000 inhabitants (Est. 2014)
- Unique mostly flat topography
- An area of 40.15km<sup>2</sup> (15.5 miles<sup>2</sup>)
- 49km (30.5 miles) of coastline
- Mixture of business types
- 5 train stations
- 8 Ferry services

# Physical Challenges

- Island city with limited space to expand the road network
- Only 3 roads linking Portsmouth to the mainland
- Very high housing density and eclectic mix of housing designs
- Historic sections of city & a large number of listed buildings
- Large student population
- 55% of those aged over 65 have a Limiting Long Term Illness (LLTI)
- Large number of cars within the city

# Psychological Challenges

- Active travel not 'cultural norm' or seen as convenient – not just a Portsmouth problem
- Low confidence in road cycling
- High 'fear of crime' levels
- High levels of cycle theft
- Limited access to affordable cycling equipment
- Poor perception of cycling within the city
- Can become a NIMBYism



# Recent Successes of Active Travel

- The creation of the Community Cycle Hub at Winston Churchill Avenue.
- An improved link between the south of the City and Cosham station (Pilgrims Way).
- The installation of additional cycle parking in busy areas of the City.
- The Shipwrights Way cycle route (phases 1 and 2).
- The improvement of signage (for both pedestrians and cyclists) within the City.

# Recent Successes of Active Travel (cont.)

- The installation of hireable Brompton bikes at the Tipner Park and Ride.
- 70% of children actively travel to school
- Cycle events in conjunction with other external business stakeholders
- More accurate walking and cycling maps
- Bikeability training to children and adults
- Wayfinding boards throughout the city

# On-going projects

- Shipwrights Way (Phase 3)
- PROW signage and mapping
- Cycle parking (various locations)
- Cycle runners
- Community Cycle Hub
- Guildhall Walk Pilgrims way
- Northern Road bridge

# On-going projects (Cont.)

- Review and remediation of current cycle infrastructure
- Signs and lines rationalisation
- Gatcombe Gardens
- Kendalls Wharf
- Building relationships with both internal and external stakeholders
- Improvements to the current cycle counters within the city
- Education and Enforcement events

# Proposed Future Schemes

- Work to promote polite cycling within the city
- Improvements to be made to the cycle network in the north western corner of the city
- Milton Road shared route
- Winston Churchill Avenue pedestrian route
- Create/improve walking/cycle routes in conjunction with new development in the city
- The continued installation/upgrading of PROW signage
- HGV Awareness – Trading Places

# Proposed Future Schemes (Cont.)

- On-going improvements being made to the walking and cycling signage within the city
- Education and Enforcement events with Hampshire Constabulary
- Walking and cycling maps to be re-designed
- GIS mapping of cycle pathways within the city to be undertaken
- Working with the University of Portsmouth to improve student safety when traveling actively
- Measure the level of interest in cycling throughout the city
- Build and maintain relationships with key stakeholders